

逐 桩 坐 标 表

项目名称:岳阳县X131线云山乡至甘田乡公路提质改造工程

S2-02

第 4 页 共 7 页

桩 号	坐 标		桩 号	坐 标		桩 号	坐 标		桩 号	坐 标	
	N (X)	E (Y)		N (X)	E (Y)		N (X)	E (Y)		N (X)	E (Y)
K6+000	3231516.239	450883.8281	K6+500	3231174.132	450583.1443	K7+000	3230871.389	450253.4028	K7+500	3230861.562	449758.2198
K6+020	3231505.107	450867.269	K6+520	3231173.182	450564.1302	K7+020	3230871.182	450233.4083	K7+520	3230859.231	449738.3597
K6+040	3231487.562	450859.261	K6+540	3231173.555	450544.5887	K7+040	3230871.321	450213.4087	K7+540	3230850.648	449720.543
K6+060	3231468.801	450853.1049	K6+560	3231162.092	450528.6189	K7+060	3230871.459	450193.4092	K7+560	3230835.342	449707.9983
K6+080	3231458.416	450836.4821	K6+580	3231143.724	450522.2324	K7+080	3230870.969	450173.424	K7+580	3230817.447	449699.2056
K6+100	3231453.912	450817.0091	K6+600	3231123.821	450524.1863	K7+100	3230870.783	450153.4713	K7+600	3230798.296	449693.4416
K6+120	3231448.621	450797.725	K6+620	3231104.172	450521.9513	K7+120	3230872.531	450133.5505	K7+620	3230781.705	449682.6052
K6+140	3231443.153	450778.4936	K6+640	3231086.643	450512.7633	K7+140	3230872.761	450113.5668	K7+640	3230767.338	449668.6919
K6+160	3231440.642	450758.7294	K6+660	3231070.016	450501.821	K7+160	3230872.393	450093.5702	K7+660	3230755.013	449652.9418
K6+180	3231440.112	450738.7501	K6+680	3231051.663	450493.9339	K7+180	3230872.025	450073.5735	K7+680	3230738.087	449642.764
K6+200	3231436.288	450719.6401	K6+700	3231033.964	450484.9654	K7+200	3230871.699	450053.5763	K7+700	3230720.384	449633.7798
K6+220	3231419.971	450708.6712	K6+720	3231017.719	450473.3311	K7+220	3230871.44	450033.5779	K7+720	3230712.53	449616.186
K6+240	3231401.655	450700.7109	K6+740	3231000.228	450463.6323	K7+240	3230871.181	450013.5796	K7+740	3230707.398	449596.8691
K6+260	3231384.32	450690.7659	K6+760	3230982.634	450454.1261	K7+260	3230870.788	449993.5848	K7+760	3230701.598	449577.7306
K6+280	3231369.219	450677.7868	K6+780	3230966.112	450443.0249	K7+280	3230870.014	449973.5997	K7+780	3230697.339	449558.234
K6+300	3231351.791	450668.6411	K6+800	3230951.023	450429.9155	K7+300	3230870.784	449953.6385	K7+800	3230707.116	449542.3786
K6+320	3231332.777	450662.5147	K6+820	3230936.287	450416.3937	K7+320	3230873.597	449933.8414	K7+820	3230724.846	449533.1246
K6+340	3231313.207	450658.3902	K6+840	3230921.55	450402.8719	K7+340	3230876.525	449914.057	K7+840	3230742.81	449524.3385
K6+360	3231294.226	450652.124	K6+860	3230909.401	450387.6785	K7+360	3230879.454	449894.2725	K7+860	3230758.449	449512.3977
K6+380	3231276.844	450642.6563	K6+880	3230903.858	450368.4644	K7+380	3230882.382	449874.488	K7+880	3230762.327	449493.7184
K6+400	3231260.588	450631.0061	K6+900	3230898.649	450349.1587	K7+400	3230883.905	449854.573	K7+900	3230746.981	449481.4245
K6+420	3231244.48	450619.152	K6+920	3230894.118	450329.6788	K7+420	3230880.552	449834.9134	K7+920	3230727.703	449476.123
K6+440	3231228.076	450607.7232	K6+940	3230889.586	450310.199	K7+440	3230873.652	449816.1822	K7+940	3230709.931	449467.3411
K6+460	3231210.861	450597.612	K6+960	3230883.609	450291.1777	K7+460	3230865.592	449797.8831	K7+960	3230699.692	449450.4714
K6+480	3231192.012	450591.1087	K6+980	3230876.079	450272.6496	K7+480	3230862.996	449778.1684	K7+980	3230694.29	449431.2629

编 制: 叶海

复 核: 曹亮

审 核: 彭

逐 桩 坐 标 表

项目名称:岳阳县X131线云山乡至甘田乡公路提质改造工程

S2-02

第 5 页 共 7 页

桩 号	坐 标		桩 号	坐 标		桩 号	坐 标		桩 号	坐 标	
	N (X)	E (Y)		N (X)	E (Y)		N (X)	E (Y)		N (X)	E (Y)
K8+000	3230691.605	449411.4857	K8+500	3230638.971	448980.1836	K9+000	3230470.241	448529.9376	K9+500	3230341.595	448102.7651
K8+020	3230686.839	449392.0619	K8+520	3230634.672	448960.6538	K9+020	3230461.483	448511.9584	K9+520	3230339.329	448082.9215
K8+040	3230686.164	449372.2752	K8+540	3230630.789	448941.0379	K9+040	3230456.469	448492.8799	K9+540	3230336.181	448063.1708
K8+060	3230694.166	449354.2144	K8+560	3230628.55	448921.2395	K9+060	3230453.14	448473.2141	K9+560	3230346.31	448046.5567
K8+080	3230704.124	449336.9008	K8+580	3230628.761	448901.2414	K9+080	3230448.642	448453.7272	K9+580	3230360.256	448032.2271
K8+100	3230706.078	449317.4069	K8+600	3230628.864	448881.2432	K9+100	3230447.615	448433.8511	K9+600	3230374.313	448018.0008
K8+120	3230703.41	449297.6121	K8+620	3230627.321	448861.3087	K9+120	3230449.891	448413.9833	K9+620	3230388.371	448003.7744
K8+140	3230702.11	449277.6578	K8+640	3230627.862	448841.371	K9+140	3230446.28	448394.4925	K9+640	3230403.401	447990.6165
K8+160	3230695.23	449259.4798	K8+660	3230626.416	448821.4482	K9+160	3230432.134	448380.7911	K9+660	3230420.088	447979.5967
K8+180	3230678.201	449250.3272	K8+680	3230622.741	448801.8033	K9+180	3230414.236	448371.8663	K9+680	3230429.115	447962.9228
K8+200	3230659.012	449244.6985	K8+700	3230613.708	448784.1545	K9+200	3230395.986	448363.6964	K9+700	3230429.359	447942.9243
K8+220	3230639.951	449238.6495	K8+720	3230603.414	448767.0227	K9+220	3230377.71	448355.5878	K9+720	3230429.253	447922.9343
K8+240	3230621.896	449230.4405	K8+740	3230588.651	448753.6233	K9+240	3230365.148	448340.5846	K9+740	3230428.038	447902.9712
K8+260	3230622.186	449211.8507	K8+760	3230578.452	448737.2086	K9+260	3230353.495	448324.6236	K9+760	3230425.468	447883.1933
K8+280	3230627.782	449192.6668	K8+780	3230574.401	448717.6273	K9+280	3230337.019	448313.2866	K9+780	3230421.639	447863.8733
K8+300	3230633.8	449173.6486	K8+800	3230568.719	448698.5194	K9+300	3230329.6	448295.12	K9+800	3230429.351	447845.5875
K8+320	3230636.316	449153.9009	K8+820	3230559.28	448680.887	K9+320	3230325.576	448275.5324	K9+820	3230430.705	447825.7833
K8+340	3230633.041	449134.374	K8+840	3230548.56	448664.0537	K9+340	3230322.179	448255.8629	K9+840	3230429.223	447805.8413
K8+360	3230624.708	449116.1946	K8+860	3230538.891	448646.5921	K9+360	3230314.004	448237.6356	K9+860	3230426.405	447786.0407
K8+380	3230620.685	449097.143	K8+880	3230522.024	448636.1312	K9+380	3230310.181	448218.3329	K9+880	3230421.902	447766.6292
K8+400	3230628.334	449078.7401	K8+900	3230510.973	448619.7901	K9+400	3230314.329	448198.8649	K9+900	3230412.508	447748.9992
K8+420	3230633.706	449059.5898	K8+920	3230504.97	448600.7581	K9+420	3230320.608	448179.8827	K9+920	3230403.827	447730.9817
K8+440	3230634.646	449039.6497	K8+940	3230499.548	448581.5172	K9+440	3230326.002	448160.6239	K9+940	3230392.037	447714.9192
K8+460	3230636.803	449019.8343	K8+960	3230488.543	448565.1815	K9+460	3230332.131	448141.5954	K9+960	3230377.335	447701.4629
K8+480	3230639.516	449000.0192	K8+980	3230478.813	448548.0076	K9+480	3230337.052	448122.2136	K9+980	3230363.326	447687.27

编 制: 叶海

复 核: 曹亮

审 核: 刘明

逐 桩 坐 标 表

项目名称:岳阳县X131线云山乡至甘田乡公路提质改造工程

S2-02

第 6 页 共 7 页

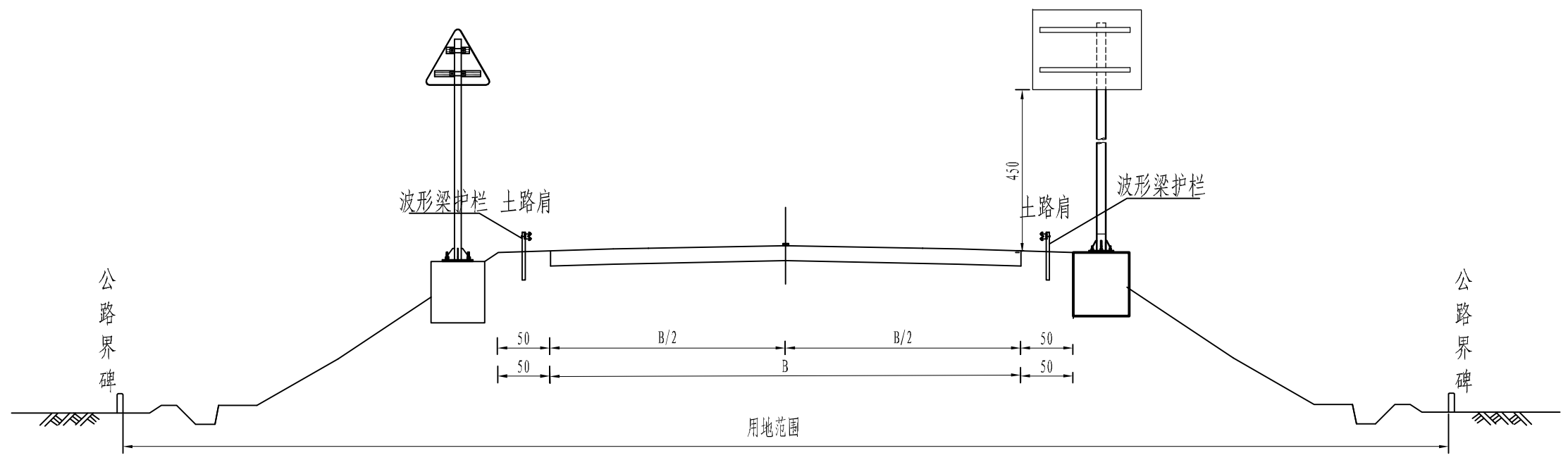
桩 号	坐 标		桩 号	坐 标		桩 号	坐 标		桩 号	坐 标	
	N (X)	E (Y)		N (X)	E (Y)		N (X)	E (Y)		N (X)	E (Y)
K10+000	3230351.166	447671.4038	K10+500	3230271.822	447270.2143	K11+060	3230079.012	446987.7985	K11+560	3230023.521	446566.558
K10+020	3230333.596	447662.6662	K10+520	3230280.969	447252.8585	K11+080	3230084.619	446969.9764	K11+580	3230009.751	446552.0698
K10+040	3230314.311	447657.368	K10+540	3230282.185	447233.5041	K11+100	3230073.991	446953.2351	K11+600	3229998.608	446535.4691
K10+060	3230295.773	447649.9915	K10+560	3230273.724	447215.6532	K11+120	3230066.865	446934.5723	K11+620	3229986.982	446519.1953
K10+080	3230279.43	447638.7316	K10+580	3230259.554	447201.5409	K11+140	3230055.681	446918.4363	K11+640	3229974.117	446503.8975
K10+100	3230266.836	447623.3411	K10+600	3230246.752	447186.2925	K11+160	3230049.601	446900.1722	K11+660	3229960.605	446489.1544
K10+120	3230255.378	447606.9708	K10+620	3230235.073	447170.1338	K11+180	3230051.817	446880.3088	K11+680	3229944.364	446477.5258
K10+140	3230244.879	447590.222	K10+640	3230222.78	447154.3969	K11+200	3230055.266	446860.6128	K11+700	3229926.742	446468.199
K10+160	3230244.129	447570.3063	K10+660	3230206.708	447148.5487	K11+220	3230056.153	446840.9478	K11+720	3229907.151	446465.1015
K10+180	3230243.368	447550.3611	K10+680	3230206.23	447165.3715	K11+240	3230044.366	446825.215	K11+740	3229887.226	446464.1745
K10+200	3230241.726	447530.4398	K10+700	3230223.069	447176.1497	K11+260	3230031.063	446810.2919	K11+760	3229867.458	446461.1708
K10+220	3230244.842	447510.8911	K10+720	3230230.588	447193.5716	K11+280	3230015.725	446797.4853	K11+780	3229848.897	446453.7382
K10+240	3230257.804	447496.1404	K10+810	3230179.074	447169.1934	K11+300	3230000.163	446785.0264	K11+800	3229830.99	446444.8734
K10+260	3230275.221	447486.3095	K10+820	3230178.789	447159.2863	K11+320	3229994.541	446766.6413	K11+820	3229813.399	446435.3567
K10+280	3230288.952	447472.1035	K10+840	3230166.18	447145.3031	K11+340	3230000.458	446747.6032	K11+840	3229794.497	446429.6447
K10+300	3230289.955	447452.8299	K10+860	3230149.471	447134.3154	K11+360	3230004	446727.9934	K11+860	3229774.583	446427.8201
K10+320	3230284.967	447433.6203	K10+880	3230135.344	447120.4682	K11+380	3230000.528	446708.6901	K11+880	3229754.713	446425.5367
K10+340	3230283.976	447413.6832	K10+900	3230123.219	447104.7048	K11+400	3229993.916	446689.8864	K11+900	3229735.14	446421.4975
K10+360	3230280.902	447394.0235	K10+920	3230105.027	447097.2915	K11+420	3229988.495	446670.6595	K11+920	3229715.618	446417.1506
K10+380	3230277.799	447374.5205	K10+940	3230086.762	447089.5133	K11+440	3229982.572	446651.5772	K11+940	3229696.066	446413.4527
K10+400	3230267.269	447357.5264	K10+960	3230072.008	447076.2049	K11+460	3229979.443	446631.9419	K11+960	3229676.167	446415.2082
K10+420	3230257.081	447340.5714	K10+980	3230061.341	447059.4779	K11+480	3229988.689	446614.995	K11+980	3229656.214	446414.1726
K10+440	3230267.622	447324.7217	K11+000	3230063.523	447040.0533	K11+500	3230005.429	446604.4421	K12+000	3229636.334	446411.9811
K10+460	3230278.096	447308.8181	K11+020	3230061.583	447020.8915	K11+520	3230023.369	446595.6331	K12+020	3229616.61	446408.8754
K10+480	3230277.357	447289.1574	K11+040	3230064.798	447001.7261	K11+540	3230035.268	446582.2898	K12+040	3229598.234	446401.5438

编 制: 叶海

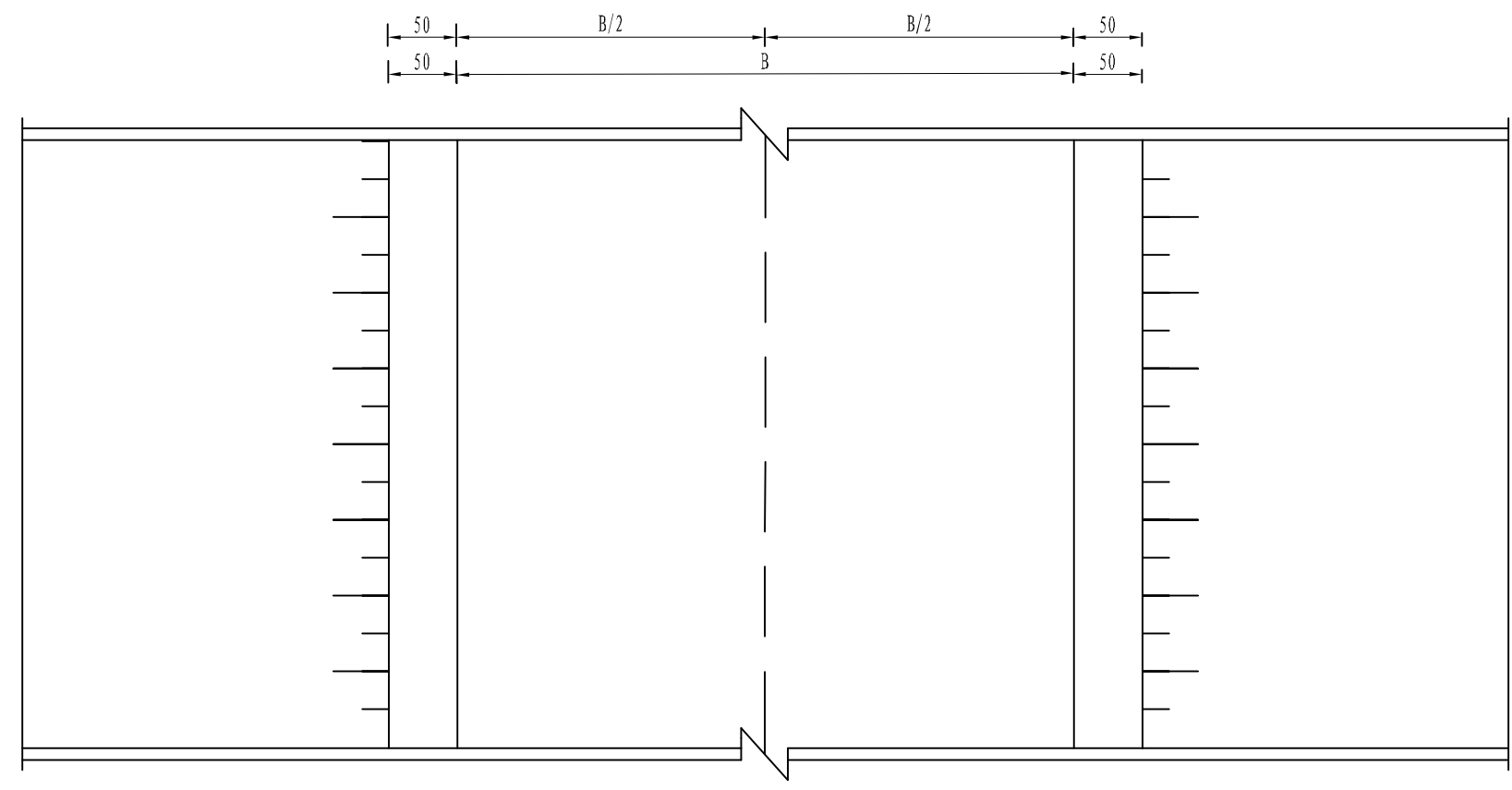
复 核: 曹亮

审 核: 彭

安全设施布设横断面图

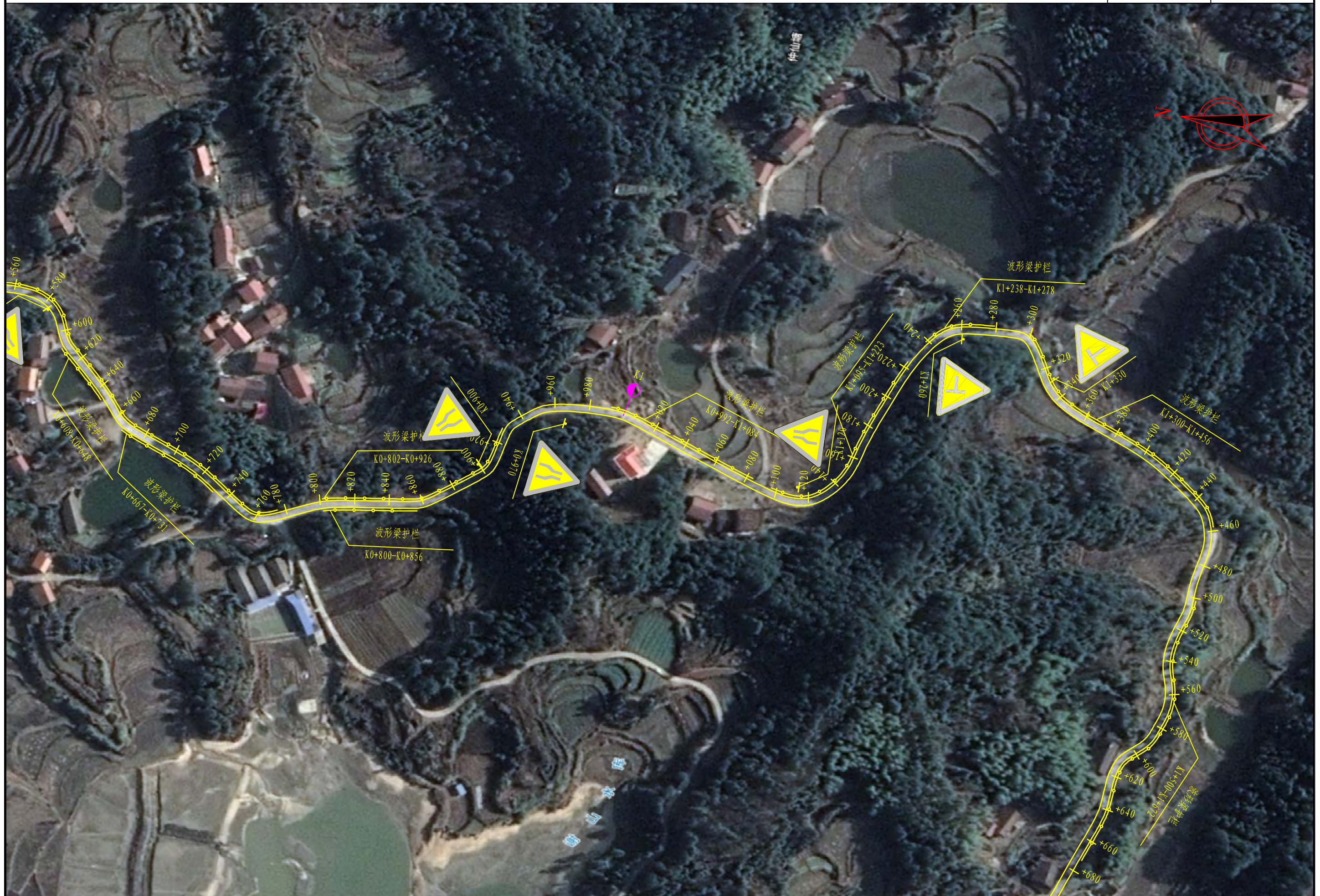


平面图



注：
1、本图尺寸均以cm计，比例为1:50。
2、本图B为道路路面宽度。







娄底市城交设计有限公司

岳阳县X131线云山乡至甘田乡公路提质改造工程

路线平面布置图

设计

梁洁

复核

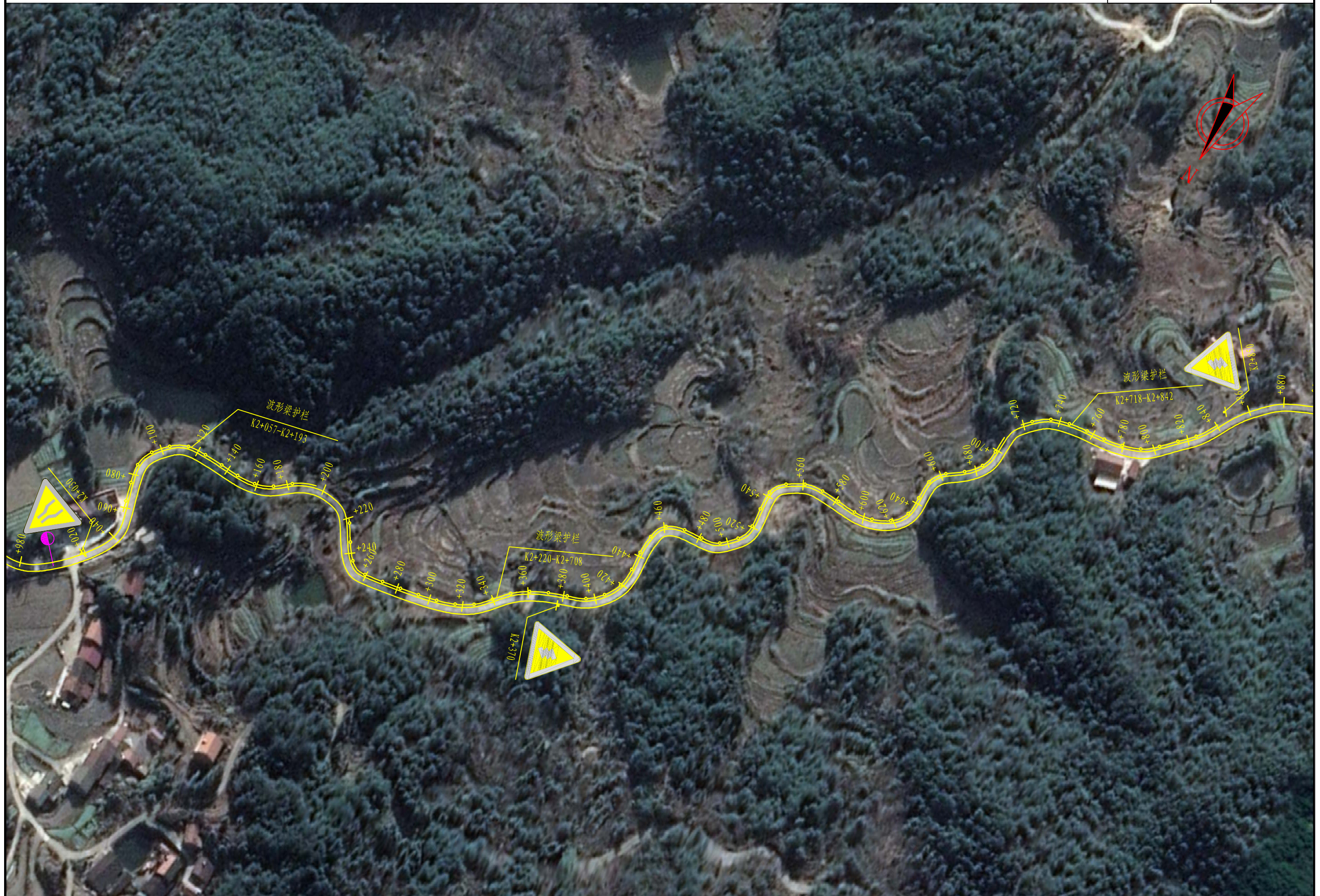
邓平

审核

刘红

图号

S2-07









娄底市城交设计有限公司

岳阳县X131线云山乡至甘田乡公路提质改造工程

路线平面布置图

设计

梁洁

复核

邓平

审核

刘红

图号

S2-07